

# Turn Research into an Impactful Asset

## CEGE: Past and Future

**CEGE** RESEARCH CENTRE IN  
MANAGEMENT AND ECONOMICS



# Research in Management & Economics



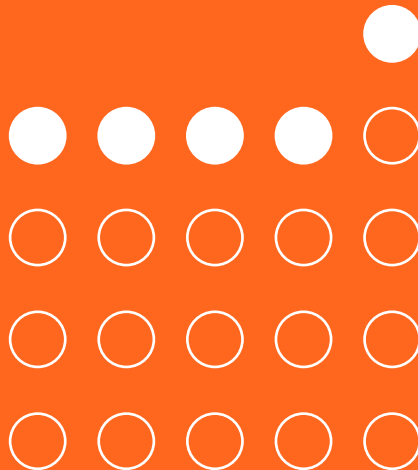
## Table of Contents

> Mission	> 04
> Vision	> 05
> Who We Are & What We Have	> 06
> Research at Católica Porto Business School & CEGE Leadership Structure & Governance	> 08
> CEGE at a Glance	> 10
> Research Groups	> 12
> Scientific Recognition	> 14
> Scientific Production	> 16
> Partnership & Cooperation	> 18
> Outreach	> 20
> Path Forward	> 22

## Mission

- > Advancing Knowledge
- > Scientific Excellence
- > Innovative Solutions

We are committed to advancing knowledge in economics and management, focusing on scientific excellence with significant societal and policy impact. CEGE - Research Centre in Management and Economics, prioritises sustainable, human-centric, and innovative solutions to tackle the critical challenges of our time.



## Vision

Turn research into an impactful asset through the following principles:

- › Active research culture
- › Empowerment and executive training
- › Actively involving and empowering students
- › Sharing knowledge and developing a fruitful dialogue with communities
- › Translating research findings into valuable, practical and developmental tools

# Turn Research into an Impactful Asset

## Who We Are

CEGE – the Research Centre in Management and Economics – frames the academic research carried out at Católica Porto Business School (CPBS). CEGE is registered, accredited, and funded by the Foundation for Science and Technology (FCT).

CPBS is part of the 1% of business schools worldwide (and the only one in the north of Portugal) that hold triple-crown accreditation (EQUIS - EFMD Quality Improvement System, AMBA - Association of MBAs, and AACSB - Association to Advance Collegiate Schools of Business). The centre focuses on sustainable, human-centric, and innovative solutions to address the major challenges of our time.



## What We Have

CEGE has a strong track record of contributing towards to management and economics, with successful partnerships across various industrial sectors. It is recognised for its impact and ongoing connection with society and policymaking. The centre also has a proven history of interdisciplinary collaboration across faculties such as art, biotechnology, law, and psychology.



- › Connection
- › Collaboration
- › Contributions
- › Partnerships

Research at Católica Porto Business School  
& CEGE Leadership Structure & Governance

The only triple-accredited school in the north of Portugal

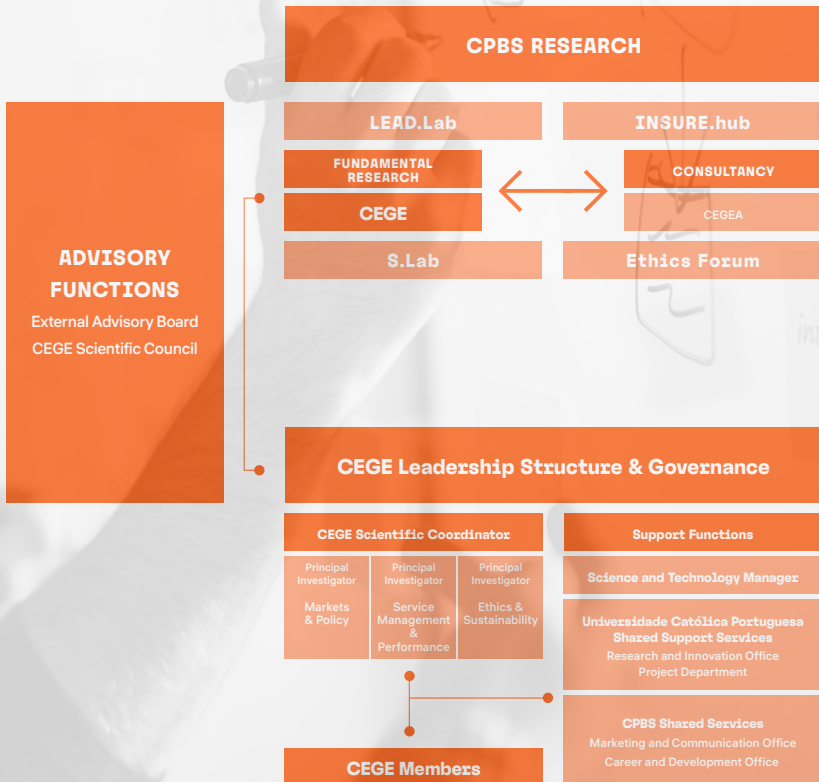
# Research at Católica Porto Business School & CEGE Leadership Structure & Governance



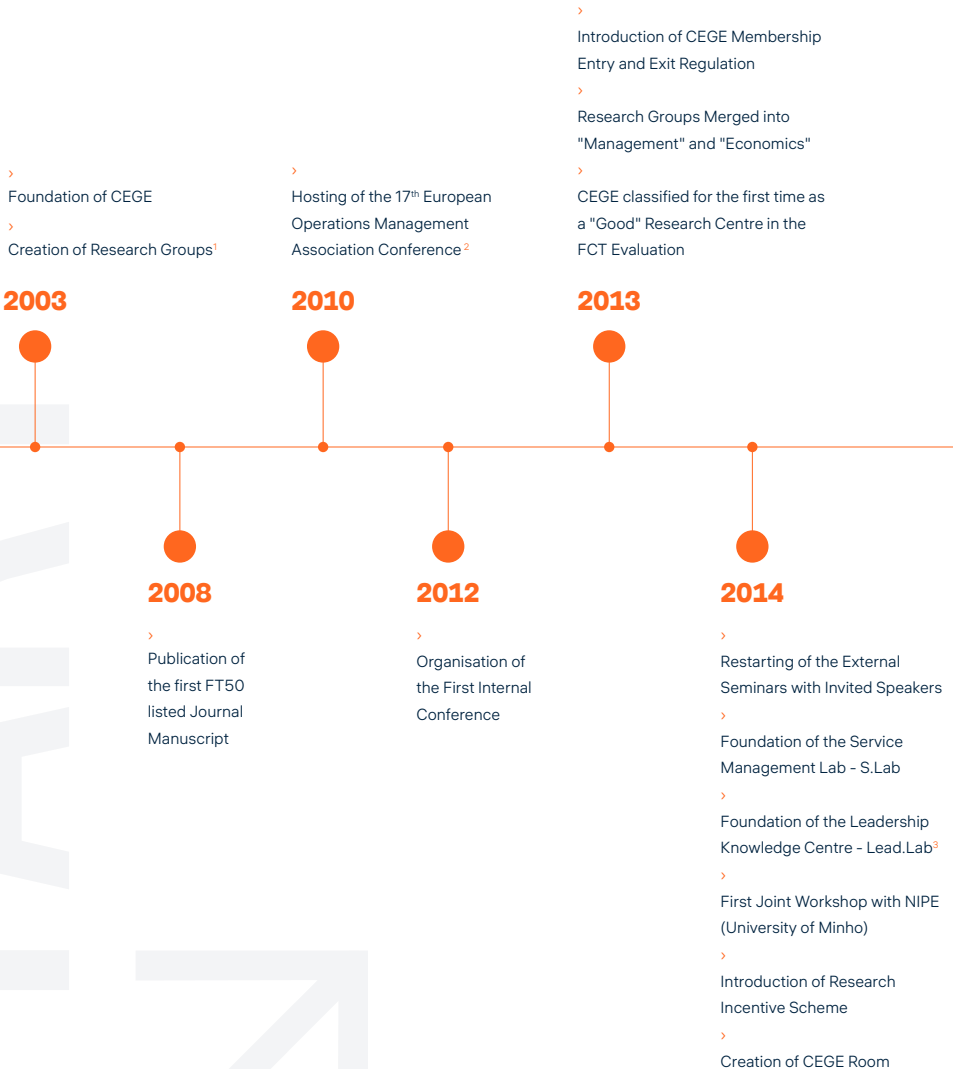


## Research at Católica Porto Business School & CEGE Leadership Structure & Governance

The only triple-accredited school in the north of Portugal.



## CEGE at a Glance



>

Redefinition  
of Research  
Groups<sup>4</sup>

>

Publication of the  
first CABS AJG 4\*  
Journal Manuscript

**2017**



**2019**

>

CEGE classified as a  
"Very Good" Research  
Centre in the FCT Evaluation

>

Foundation of  
INSURE.Hub<sup>5</sup>

**2021**



**2022**

>

Research Incentives  
Shift their Focus  
High-Quality Journals  
(CABS AJG 3+)

>

First  
NorthernSeam  
Seminar<sup>6</sup>

**2023**



<sup>1</sup>Environmental and Natural Resources Economics and Policy, Operations and Technology Management

<sup>2</sup>First major international conference with over 500 Participants

<sup>3</sup>Originally Behavioural Sciences Lab, a joint initiative with CPBS and the Faculty of Education and Psychology

<sup>4</sup>Redefinition of Research Groups: Markets and Policy, Service Management and Performance, Sustainability and Ethics

<sup>5</sup>Created by Católica Porto Business School, Faculty of Biotechnology and Planetiers World Gathering that involves more than 80 public and private institutions

<sup>6</sup>Northern Seminar Day in Economics and Management (jointly organised by CEGE, CEFUP and NIPE)

## Research Groups

**Sustainable,  
human-centric,  
and innovative  
solutions to  
tackle the major  
challenges  
of our time.** 

## Research Groups

### RESEARCH GROUPS

#### Markets & Policy

Focuses on analysing individual decisions related to consumption and investment from both behavioural and financial perspectives, assessing their impact on economic activity.

It considers the regulatory and legal frameworks of various sectors, government efficiency, and macroeconomic policies.

The group is interdisciplinary, employing a range of methodologies to explore the factors that drive market creation, development, and policy evaluation.

#### Service Management & Performance

Examines services from various perspectives, including operations, marketing, and information systems.

It conducts innovative research to advance the field of service management, using diverse methodologies such as surveys, case studies, and quantitative modelling.

Key topics include technology enabled services, benchmarking, service networks, and the servitisation of manufacturing.

The research strategy is rooted in empirically driven theory, with a strong focus on business relationships.

#### Ethics & Sustainability

Explores ethical behaviour within organisations, considering its impact on sustainability across social, economic, health, and environmental dimensions.

It aims to develop ethical decision-making frameworks that incorporate human competences, leadership, and social relationships to enhance well-being and environmental sustainability.

The group also promotes sustainable, ethical leadership and management in various sectors, including social economy and healthcare.

## Scientific Recognition

Since 2018

CEGE conducts fundamental research and enhances research quality and societal impact, particularly focusing on three key areas of expertise.



- > Connection
- > Collaboration
- > Contribution
- > Partnerships

↗ 35

**Projects**

14 International

↗ 8

**Awards**

in Management  
& Economics

↗ 7

**Policy Briefs**

↗ 72

**Invited Speakers**  
at Meetings

↗ 18

**Editorial Board**  
Members

↗ 94

**Hosted Events**

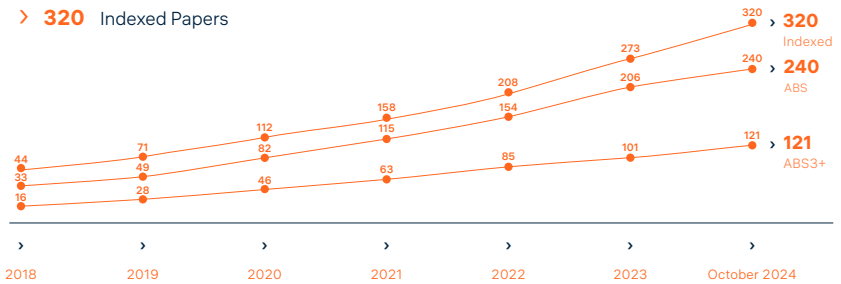
## Scientific Production

### Research Outputs since 2018



### Articles

- > 240 ABS Indexed Papers
- > 121 ABS3+ Indexed Papers
- > 320 Indexed Papers

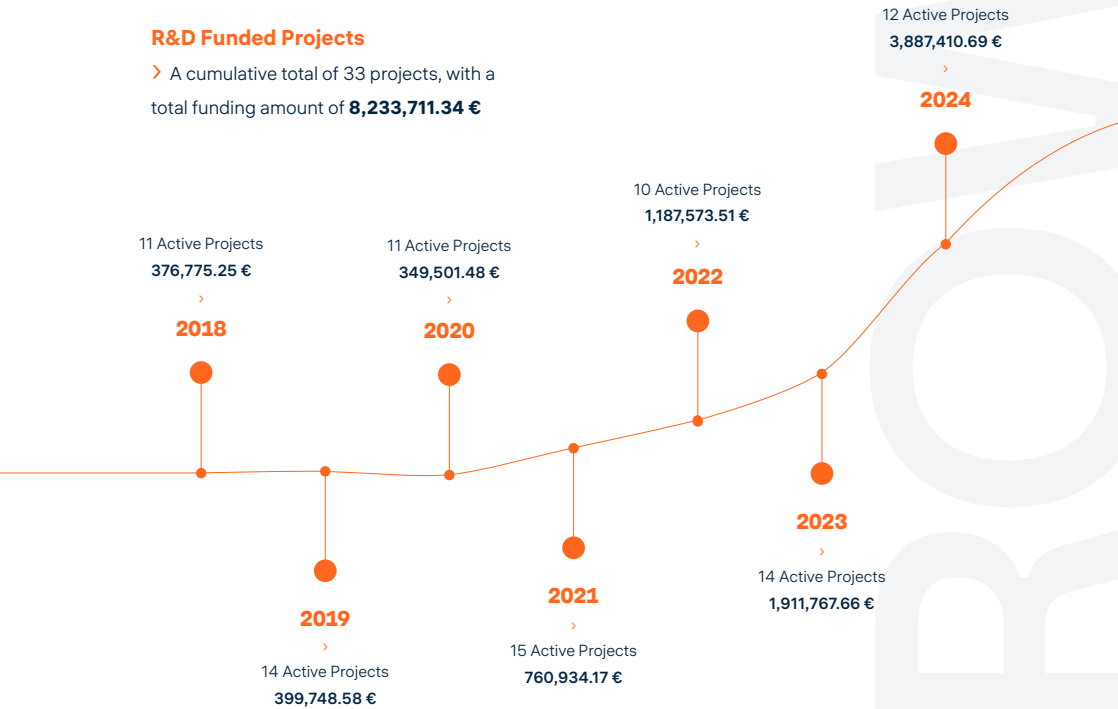




## Scientific Production

### R&D Funded Projects

> A cumulative total of 33 projects, with a total funding amount of **8,233,711.34 €**



## Partnership & Cooperation

Industrial partnership via knowledge transfer centres & CEGEA since 2018



## Partnership & Cooperation

Since 2018

Engaging with various academic institutions, from universities to research centres and polytechnic institutes.

- > Connection
- > Collaboration
- > Contribution
- > Partnerships

↗ 442

**Collaborations**  
with Academic Institutions

↗ 43%

**International**

↗ 47

**Countries**

## Outreach

Since 2018

Dissemination to a  
global audience

### 90+ Events Organised

>

Successfully organised over 90 events, ranging from conferences and joint open classes, to seminars and workshops.

### 360+ Event Participations

>

Actively participated in over 360 events, contributing their expertise to broader academic and professional communities.

**43  
International  
Guest Speakers**

>

Hosted seminars featuring 43 distinguished international guest speakers.

**40  
Publications**

>

Co-authored with students

**270+  
Media Publications**

>

CEGE members featured in 275 media publications such as on the TV, Radio, Online and in the Press.



Dissemination across diverse audiences and communities, shaping policy and driving informed business decisions.

## Path Forward

Future activities will focus on three key dimensions.



**CPBS**  
Católica Porto  
Business School

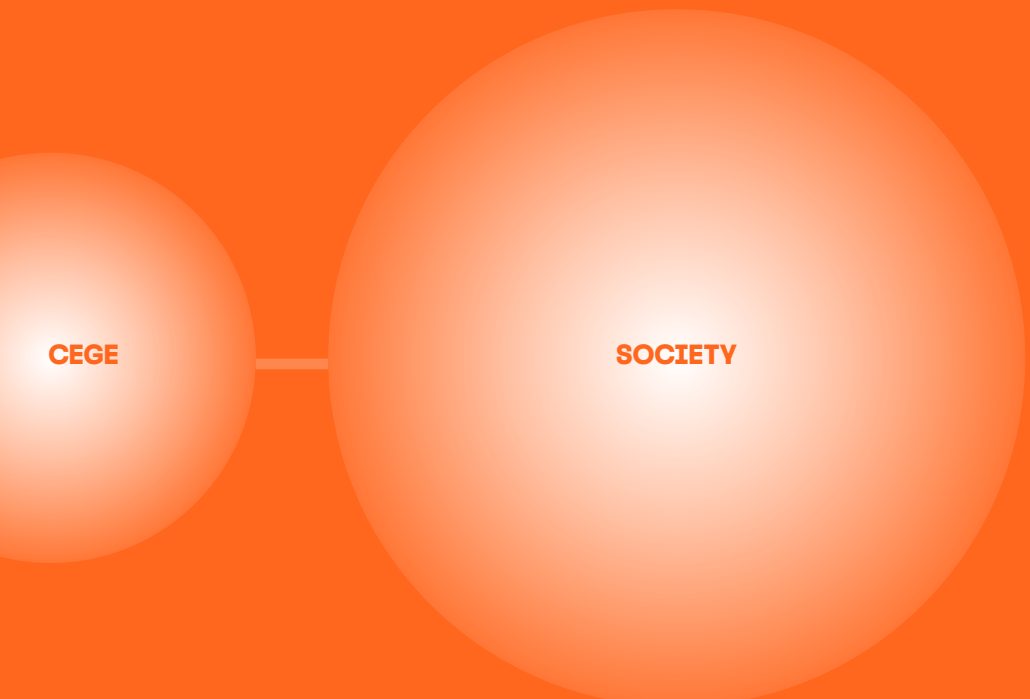
### Interconnection with CPBS and UCP

Reform research incentives, foster an active research culture, involve students, and promote interdisciplinary partnerships.

**UCP**  
Universidade Católica  
Portuguesa

### **Interconnection with Society and Business**

Translate research into practical tools, share knowledge, and maintain a strong dialogue with the business community and society.



### **Internal**

Promote research excellence, enhance access to funding, empower researchers, and strengthen collaboration with Labs for data collection and knowledge sharing.



**CEGE**  
**Research Centre in Management  
and Economics**

**Universidade Católica Portuguesa**

Rua Diogo Botelho, 1327

4169-005 Porto

+351 226 196 200 (Ext.: 444)

cege.cpbs@ucp.pt

www.cege.catholicabs.porto.ucp.pt

**CEGE Scientific Coordinator**

**Božidar Vlačić**

bvlacic@ucp.pt

**CEGE Principal Investigator of the  
Markets and Policy Research Group**

**Joana Pinho**

jpinho@ucp.pt

**CEGE Principal Investigator of the  
Service Management and Performance  
Research Group**

**Conceição Silva**

csilva@ucp.pt

**CEGE Principal Investigator of the  
Ethics and Sustainability Research Group**

**Arménio Rego**

arego@ucp.pt

**CEGE Science & Technology Manager**

**Vasco Sistelo**

vsistelo@ucp.pt



**CATOLICA**  
CEGE - RESEARCH CENTRE IN  
MANAGEMENT AND ECONOMICS

18093



Fundação  
para a Ciência  
e a Tecnologia

This work is supported by FCT  
Fundação para a Ciência e Tecnologia, I.P.,  
by project reference UIDB/00731/2020 and  
DOI identifier 10.54499/UIDB/00731/2020  
<https://doi.org/10.54499/UIDB/00731/2020>

